



UNIVERSITÀ  
DEGLI STUDI  
DI BERGAMO

Dipartimento  
di Lingue, Letterature  
e Culture Straniere

Dipartimento  
di Ingegneria  
e Scienze applicate

Dipartimento  
di Lettere, Filosofia,  
Comunicazione

Scuola  
di alta formazione  
dottorale



# BOOKLET

## OF THE INTERNATIONAL LANDSCAPE WORKSHOP

### *Research Patches and World Imaginaries*

Valle di Astino, Parco Adda Nord  
27-28-29-30 April 2026

**PhD Program in *Landscape Studies for Global and Local Challenges***  
XLI cycle – a.y. 2025-2026

*in collaboration with*



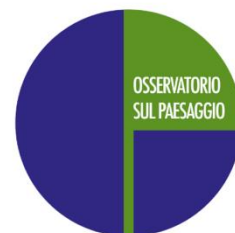
**CST**

Centro studi sul territorio  
Lelio Pagani

UNIVERSITÀ DEGLI STUDI  
DI BERGAMO



IMAGO  
MUNDI  
LAB



OSSERVATORIO  
SUL PAESAGGIO

Centro studi sul Territorio Lelio Pagani - Imago Mundi LAB  
Università degli studi di Bergamo

Osservatorio sul Paesaggio

# Summary

Introduction .....	3
Who we are .....	4
Program .....	7
Day by Day .....	10
PhD students' feedback.....	17
Events posters .....	18
Immersive walks through research patches and world imaginaries: a transcalar approach .....	20

# Introduction

## Objective:

The 2026 edition of the International Landscape Workshop is an on-field interdisciplinary research experience promoted by the UniBg Imago Mundi Lab and mainly addressed to 20 junior researchers (PhD candidates, post-docs, etc.). The aim is to integrate geographical and historical theories, methods, and tools with other disciplines – such as linguistics, visual studies, sociology, architecture, urban planning – to reflect on landscape as a complex and trans-scale concept. It is, therefore, articulated in some sessions starting from global challenges related to world dynamics and imaginaries launched from a “cohabiting” perspective by three keynote speeches about “landscape”, “urbanity”, and “heritage”. Each session, then, focuses on specific case-studies considered as “research patches” and highlighting global stakes.

## Methods:

A collaborative approach will guide participants in immersive research experiences, based on methods for the global – ecological, just, economic, and digital – transitions to face world challenges, through “territorial patches” analysis.

## Languages:

English, Italian, French

## Institutional partners:



## Dedicated website:



# Who we are

## Scientific Committee



**Fulvio Adobati**

University of Bergamo, Director of Centro Studi sul Territorio "Lelio Pagani"



**Jean-Marc Besse**

Centre National de la Recherche Scientifique, École des Hautes Études en Sciences Sociales



**Federica Burini**

University of Bergamo, Coordinator of Imago Mundi Lab and Delegate for Public Engagement, President of the Master's Course in Planning and Management of Tourism Systems



**Angelo Cattaneo**

Institute of Mediterranean European History of the National Research Council



**Stefania Consonni**

University of Bergamo, Delegate for Communication at the Department of Foreign Languages, Literatures and Cultures



**Edith Fagnoni**

Sorbonne Université and President of the Association of French Geographers (Association de Géographes Français - AGF)



**Alessandra Ghisalberti**

University of Bergamo, Coordinator of the PhD Program in Landscape Studies for Global and Local Challenges, President of the Master's Course in Geo-urban planning



**Michel Lussault**







École Normale Supérieure de Lyon, Département des Sciences Sociales










**Riccardo Rao**

University of Bergamo, Member of the European Landscape Observatory

## Other Contributors

 <p><b>Lorenzo Amato</b> University of Bergamo, Institute of Methodologies for Environmental Analysis of the National Research Council</p>	 <p><b>Simone Gamba</b> University of Bergamo, Department of Law</p>	 <p><b>Stefano Morosini</b> University of Bergamo, Delegate for International Research in the Humanities and Law</p>	 <p><b>Luís Quinta-Nova</b> Instituto Politécnico de Castelo Branco</p>
 <p><b>Alessandro Ricci</b> University of Bergamo, Department of Human and Social Sciences</p>	 <p><b>Mathis Stock</b> University of Lausanne, Institute of Geography and Sustainability</p>		

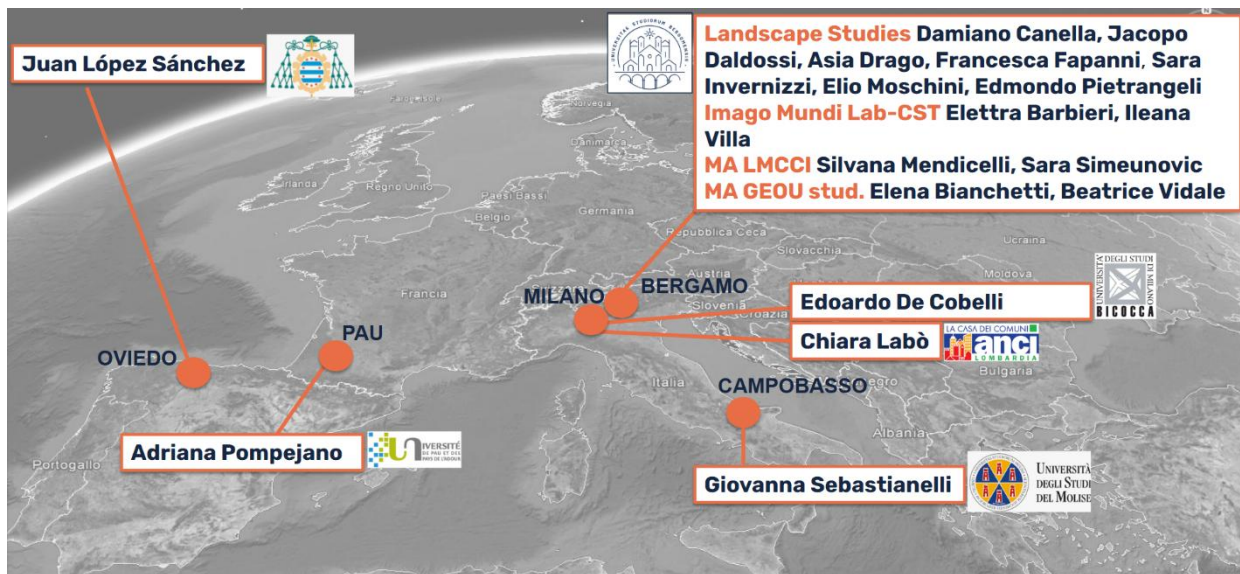
## Communication and Organizational Committee

 <p><b>Francesco Antonelli</b> University of Bergamo, PhD candidate in Transcultural Studies in Humanities (coordinator)</p>	 <p><b>Michele Galella</b> University of Bergamo, PhD candidate in Landscape Studies for Global and Local Challenges (coordinator)</p>	 <p><b>Alice Bassanesi</b> University of Bergamo, PhD candidate in Transcultural Studies in Humanities</p>	 <p><b>Elena Canovo</b> University of Bergamo, PhD candidate in Landscape Studies for Global and Local Challenges</p>
 <p><b>Matteo Locatelli</b> University of Bergamo, PhD candidate in Landscape Studies for Global and Local Challenges</p>	 <p><b>Mikel Magoni</b> University of Bergamo, PhD candidate in Transcultural Studies in Humanities</p>	 <p><b>Roberta Valsecchi</b> University of Bergamo, PhD candidate in Landscape Studies for Global and Local Challenges</p>	

## Video Communication



## Participants



- Elettra Barbieri** - Università degli studi di Bergamo
- Elena Bianchetti** - Università degli studi di Bergamo
- Damiano Canella** - Università degli studi di Bergamo
- Jacopo Daldossi** - Università degli studi di Bergamo
- Edoardo De Cobelli** - Università degli Studi di Milano-Bicocca
- Asia Drago** - Università degli studi di Bergamo
- Francesca Fapanni** - Università degli studi di Bergamo
- Sara Invernizzi** - Università degli studi di Bergamo
- Chiara Labò** - Università degli studi di Bergamo
- Juan López Sánchez** - Universidad de Oviedo
- Silvana Mendicelli** - Università degli studi di Bergamo
- Elio Moschini** - Università degli studi di Bergamo
- Edmondo Pietrangeli** - Università degli studi di Bergamo
- Adriana Pompejano** - Université de Pau et des Pays de l'Adour
- Giovanna Sebastianelli** - Università degli Studi del Molise
- Sara Simeunovic** - Università degli studi di Bergamo
- Beatrice Vidale** - Università degli studi di Bergamo
- Ileana Villa** - Università degli studi di Bergamo

# Program

## Monday, 27 April – Ancient Monastery of Astino

2.00 pm – **Welcome and Introduction**

**Fabio Bombardieri**, President of MIA Foundation

**Alessandra Ghisalberti**, Coordinator of PhD program in Landscape Studies for Global and Local Challenges

### FIRST SESSION – EARTH URBANITIES AND COINHABITING

2.30 pm – **Cultures matérielles de la cohabitation**

**Michel Lussault**, Ecole Normale Supérieure de Lyon

3.30 pm – *Discussion with participants*, led by **Federica Burini** and **Alessandro Ricci** (UniBg)

4.00 pm – **Workshop: Placetelling Experience in the Astino Landscape on Material Cultures**

A co-creative activity, led by **Alice Bassanesi** and **Mikel Magoni** (UniBg)

5.30 pm

**Café littéraire - A Public Engagement Initiative** of the Department of Foreign Languages, Literatures, and Cultures in collaboration with Fondazione MIA and FrancoAngeli



#### Coabitiamo!

**Per una nuova urbanità terrestre**

Book presentation by **Michel Lussault**

Edited by **Federica Burini** and **Alessandra Ghisalberti**

Italian translation by **Simone Gamba**

#### Hyperplaces

**A Transmedia Co-Creation Event with Michel Lussault**

Video and music by **Stefano Giovannardi** and **Luca Lezziero**

Introduction by **Stefania Consonni**

With the participants

Media partner: UniBG OnAir, the University of Bergamo's web radio

[Click here to participate online](#)

In collaboration with:



## Tuesday, 28 April – Ancient Monastery of Astino

### SECOND SESSION – LANDSCAPE AND CULTURAL HERITAGE

9.30 am – **La fabrique touristique du patrimoine**

**Edith Fagnoni**, Sorbonne Université

10.30 am – *Discussion with participants*, led by **Fulvio Adobati** (UniBg)

11.30 am – **Workshop: A Place-based World History through Landscape Imaginaries: Co-designing Epistemological Reflections**

by **Angelo Cattaneo** (ISEM-CNR) and **Alessandra Ghisalberti** (UniBg)

12.00 pm – *Interaction with participants*, led by **Michele Galella** and **Francesco Antonelli** (UniBg)

2.00 pm – **Workshop: Critical Approaches to Landscape Digital Imaginaries** by **Mathis Stock**, University of Lausanne and **Federica Burini** (UniBg)

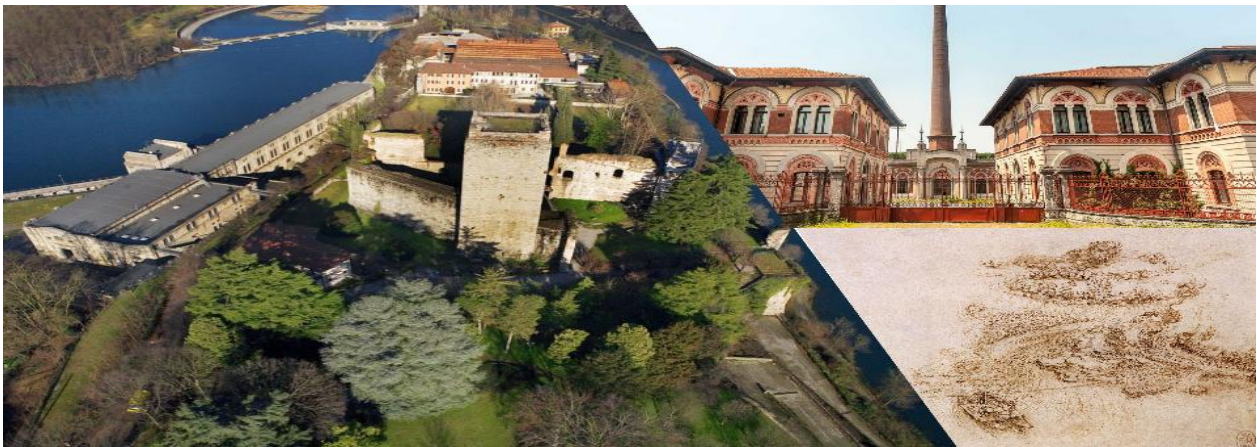
3.30 pm – *Interaction with participants*, led by **Lorenzo Amato** (IMAA-CNR) and **Roberta Valsecchi** (UniBg)

4.00 pm – **European University Alliance**   
**Multicriteria Spatial Analysis Applied to Landscape Planning**  
**Luis Quinta-Nova**, Politecnico Castelo Branco

## Wednesday, 29 April – Adda Nord Regional Park

### FIELD TRIP – ON THE TRACES OF LEONARDO DA VINCI AND THE INDUSTRIAL LANDSCAPES WITHIN THE ADDA NORD REGIONAL PARK

A Public Engagement activity with the contribution of



*Field trip to the Adda Nord Regional Park between historical and socio-territorial complexity: traditional activities, Leonardo's sketches, Crespi d'Adda UNESCO site of industrial archaeology, water conservation, and communities' participation.*

8.00 am – Bergamo: Departure from coach station

9.00 am – Trezzo sull'Adda: Arrival and welcome at **Villa Gina**

9.30 am – Welcome by **Giorgio Monti** (President of PAN), introduction by **Ignazio Ravasi** (Parco Adda Nord), **Giorgio Ravasio** (Crespi d'Adda UNESCO World Heritage Site); Chair: **Tomaso Colombo** (Director PAN)

10.00 am – **Droit du paysage, droit au paysage ?**  
**Jean-Marc Besse** CNRS, École des Hautes Études en Sciences Sociales

10.40 am – *Discussion*, led by **Angelo Cattaneo** (CNR-ISEM) and **Stefano Morosini** (UniBg)

11.15 am – **Crespi d'Adda**: Transfer to UNESCO World Heritage Site visitor centre and walk to Industrial village

12.30 pm – Trezzo sull'Adda: Transfer and lunch on a boat **Taccani Power Station**

2.30 pm – Walk along **Adda gorge**: Addolorata Chapel “Emozioni vinciane” - **Leonardo's** sketches of Adda landscape; then San Michele Bridge, Paderno Canal, Diga Vecchia, Tre Corni, Stallazzo and Rocchetta Chapel, led by **Elena Canovo** and **Matteo Locatelli** (UniBg)

4.30 pm – Imbersago: Transfer to **Leonardo Ferry**

5.30 pm – Return to Bergamo coach station, Bergamo

### **Thursday, 30 April – Ancient Monastery of Astino Valley**

#### **FINAL SESSION – RESEARCH PATCHES AND WORLD IMAGINARIES AS PROFESSIONAL SKILLS**

Chairs: **Alessandra Ghisalberti** (UniBg) and **Michel Lussault** (ENS de Lyon)

9.30 am – *Feedback from participants*, led by **Riccardo Rao** and **Stefano Morosini** (UniBg)

11.00 am – *Round Table for Final Remarks and Future Perspectives*

**Fulvio Adobati, Jean-Marc Besse, Federica Burini, Angelo Cattaneo, Stefania Consonni, Edith Fagnoni, Luís Quinta-Nova, Alessandro Ricci**

12.30 pm – Conclusion

## Day by Day



### Monday, 27 April – Ancient Monastery of Astino



The opening day of the International Landscape Workshop took place at the Ancient Monastery of Astino, in the Sala Guala. The session began with a welcome by **Fabio Bombardieri** (MIA Foundation President), who acknowledged the collaboration with the University of Bergamo and welcomed participants and guests.



**Alessandra Ghisalberti** introduced the workshop, presenting its trans-scalar and interdisciplinary approach, aimed at connecting humanistic and technical disciplines in order to foster critical reflections on landscape. The workshop was framed as a co-design experience, supported by a network of institutional partners, including geographical and cartographic associations and research institutes. The objectives of the school were outlined, with a focus on participants' active contribution through group work and final presentations connecting the workshop themes with their own research.



The first session, titled *"Hearth Urbanities and Coinhabiting"*, opened with a lecture by **Michel Lussault** (Ecole Normale Supérieure de Lyon) who focused on the concept of planetary urbanization. He described the global urban system, emerging since the 1950s, as the new milieu of habitation, where all forms of life are embedded in networks of material and immaterial relations. According to Lussault, there are no longer "natural" spaces external to urbanization, as the entire planet is

now integrated into a globalized system. The following discussion was moderated by **Federica Burini** and **Alessandro Ricci**.

The afternoon continued with the workshop *"Placetelling Experience in the Astino Landscape on Material Cultures"*, a field-based activity led by **Alice Bassanesi** and **Mikel Magoni**. Participants engaged in a placetelling experience in the Astino Valley, focusing on material cultures and landscape interpretation through an immersive and co-creative approach.



The day concluded with the *Café littéraire*, a public engagement initiative of the Department of Foreign Languages, Literatures, and Cultures in collaboration with Fondazione MIA and FrancoAngeli. The event was centered on the presentation of **Michel Lussault's** book *"Coabitiamo! Per una nuova urbanità terrestre"*, edited by **Federica Burini** and **Alessandra Ghisalberti**, with Italian translation by **Simone Gamba**.

## HYPERPLACES

The event was enriched by *Hyperplaces*, a transmedia co-creation experience with **Michel Lussault**, featuring video and music by **Stefano Giovannardi** and **Luca Lezziero**. The initiative involved PhD students in readings and participatory moments, combining academic reflection with performative and artistic dimensions. The experience was designed as a hybrid format integrating text, sound, and visual elements. The *Café Littéraire* was supported by UniBG OnAir, the University of Bergamo's web radio, acting as media partner for the event.



### Tuesday, 28 April – Ancient Monastery of Astino

The second day of the International Landscape Workshop focused on the relationship between landscape, heritage, cultural imaginaries, and digital transformations. The morning opened with the second session, titled "Landscape and Cultural Heritage", held at the Ancient Monastery of Astino and structured through a series of interdisciplinary lectures and workshops.



The morning lecture by **Edith Fagnoni** (Sorbonne Université) examined how tourism produces and reshapes heritage, influencing the reputation and identity of places. She introduced heritage-making as a “glocal” process, co-produced through global recognition systems such as UNESCO and local specificities (“patrimondialization”). She stressed that heritage is actively constructed through commodification and aestheticization, within an integrated “triptych” of urban, cultural, and tourism development. Finally, she highlighted how digital circulation turns iconic site into global symbols, producing simplified “territory clichés” and raising issues of commodification and banalization. The following discussion was moderated by **Fulvio Adobati**.



The morning continued with a lecture by **Angelo Cattaneo** (ISEM-CNR) and **Alessandra Ghisalberti** on the relationship between landscape, cartography, and world history. They showed how representations of distant territories contributed to the construction of global imaginaries and systems of knowledge. Cartography was presented as a field where scientific description, symbolic meanings, and narrative elements coexist, with toponyms acting as both geographic references and cultural markers. Landscape was discussed as a layered and relational construct, raising epistemological questions about its status between reality and perception.

The lecture concluded with a group activity led by **Michele Galella** and **Francesco Antonelli**, where the participants were divided into three groups. Each group reflected on the themes of the lecture and later presented their outcomes in a collective discussion, sharing different perspectives on landscape imaginaries, representation, and scale.



In the afternoon, **Mathis Stock** (University of Lausanne) together with **Federica Burini**, focused on the role of digital technologies in shaping contemporary landscape imaginaries. Within this framework, landscape is increasingly mediated by social media and algorithmic systems. The “Instagrammization” of places contributes to standardized visual codes, producing homogenized and

highly recognizable images of landscapes, often linked to overtourism and “Instagrammable” destinations. They also reflected on artificial intelligence as a tool for generating landscape representations, capable of simulating human perception through existing visual patterns. This raises critical questions about the relationship between human and non-human perception and about landscape as a cultural and semiotic construction.



The workshop continued by an interactive discussion with participants led by **Lorenzo Amato** and **Roberta Valsecchi**, where key themes were further elaborated and debated.

The final lecture of the day was led by **Luís Quinta-Nova** (Politecnico Castelo Branco), who presented the European University Alliance BAUHAUS4EU and its role in fostering sustainable, inclusive, and resilient territorial transformations. The initiative promotes interdisciplinary education, student-led courses, and cooperation between universities and regional ecosystems, with a focus on future skills and challenge-based learning. Then he introduced multicriteria spatial analysis as a methodological tool for landscape planning. Using the Analytic Hierarchy Process (AHP) and Geographic Information Systems (GIS), he showed how environmental, social, and economic variables can be integrated to evaluate land-use suitability under different climate scenarios. Case studies from Portugal demonstrated how species distribution and land-use patterns are expected to change under future climatic conditions.



The day concluded with a broader reflection on the importance of interdisciplinary approaches to landscape planning, combining quantitative tools and ecological knowledge to support more sustainable territorial governance in the face of environmental change.

### **Wednesday, 29 April – Adda Nord Regional Park**

The third day of the International Landscape Workshop was dedicated to a field trip within the Adda Nord Regional Park, conceived as a public engagement activity combining research, territorial knowledge, and experiential learning.



The day began with departure from Bergamo and arrival at Villa Gina in Trezzo sull'Adda, where participants were welcomed by local institutional representatives. **Giorgio Monti** (President of PAN), together with **Ignazio Ravasi** (PAN) and **Giorgio Ravasio** (Crespi d'Adda UNESCO World Heritage Site), introduced the territorial context, highlighting the park as a complex system composed of multiple municipalities and diverse landscapes. Particular attention was given to the presence

of the UNESCO World Heritage Site of Crespi d'Adda and to the role of the park in managing the relationship between environmental protection, cultural heritage, and local communities. The session was chaired by **Tomaso Colombo** (Director PAN).

The keynote lecture by **Jean-Marc Besse** (CNRS, École des Hautes Études en Sciences Sociales), *Droit du paysage, droit au paysage?*, addressed the relationship between landscape and law. Besse traced the evolution of landscape protection from an aesthetic and patrimonial perspective toward a broader understanding of landscape as a socio-ecological and political construct. He highlighted the importance of the European Landscape Convention (2000), which defines landscape as a territory as perceived by populations and recognizes its role in individual and collective well-being. The lecture introduced the concept of the “right to landscape,” framing it within the broader context of social rights. In this perspective, landscape is not only an object to be protected but also a fundamental condition for human dignity and quality of life. Besse identified key dimensions such as the right to access landscapes, the right to live in a healthy and meaningful environment, and the right to participate in landscape-related decision-making processes. He also opened a reflection on emerging legal frameworks recognizing natural entities, such as rivers, as subjects of rights, suggesting a shift toward more relational and inclusive understandings of landscape.



Following the discussion, participants moved to **Crespi d’Adda**, where a guided walk through the industrial village allowed for a direct exploration of its historical and social structure. The site, recognized as a UNESCO World Heritage Site, represents a significant example of industrial heritage where the relationship between production, settlement, and social organization is still legible.



After lunch on a boat, participants continued the experience, sailing along the Adda River near the Taccani Power Station. The navigation itself offered a close view of the river landscape and the industrial site from the water.

The afternoon continued with a walk along the Adda gorge, guided by **Elena Canovo** and **Matteo Locatelli**. The itinerary included several key points, such as the Addolorata Chapel, associated with Leonardo da Vinci’s sketches of the Adda landscape, the San Michele Bridge, the Paderno Canal, the Diga Vecchia, Tre Corni, Stallazzo, and the Rocchetta Chapel. This immersive experience highlighted the multiple layers of the landscape, from historical and industrial heritage to ecological and geomorphological features, as well as the cultural imaginaries connected to Leonardo’s representations. The day concluded with the return to

Bergamo, leaving participants with a deeper, embodied understanding of landscape as a complex, lived, and relational system shaped by history, practices, and collective perceptions.

### **Thursday, 30 April - Ancient Monastery of Astino Valley**



The final session, chaired by **Alessandra Ghisalberti** and **Michel Lussault**, was dedicated to collective feedback and reflection. Participants shared key words and concepts emerging from the workshop. These contributions highlighted the multiplicity of approaches to landscape and the importance of integrating different disciplinary viewpoints. Within this discussion, the concept of landscape justice,

introduced by **Federica Burini**, emerged as a key interpretative framework, linking landscape to the common good and to broader ethical and social responsibilities. The feedback from participants was followed by a synthesis led by **Riccardo Rao** and **Stefano Morosini**, who further developed and contextualized the main themes that had emerged during the workshop. The session concluded with a round table discussion, focusing on future perspectives and the development of research and professional skills in the field of landscape studies.

## PhD students' feedback

During the last day of the International Landscape Workshop, participants were invited to reflect on their experience and choose a word that best represented the workshop for them. Each participant then had the opportunity to contextualize their choice, explaining how that word connected to the activities, discussions, and encounters that had taken place throughout the week.

This exercise was conceived as a meaningful way to gather the individual thoughts and impressions of each participant, allowing every voice to contribute to a collective reflection on the workshop as a whole. It also served as an opportunity to look back on everything that had been experienced, discussed, and built together over the course of four intense and stimulating days, from theoretical debates to hands-on fieldwork, from group exchanges to personal discoveries.

The words that emerged from this exercise offer a vivid and diverse portrait of the workshop, capturing its richness from multiple perspectives and sensibilities.

A word cloud of Italian words in various colors and sizes, representing feedback from PhD students. The words are: persona, dispositivo, prospettivaetica, natura, mediazione, soglia, attrito, cooperazione, decostruire, condivisione, cura, intelligenza artificiale, comunità, negoziare, accendere, punto, divista, metabolismo, vissuto, stratificazione, studio, conflitto.

# Events posters



UNIVERSITÀ  
DEGLI STUDI  
DI BERGAMO

Dipartimento  
di Lingue, Letterature  
e Culture Straniere

Dipartimento  
di Ingegneria  
e Scienze applicate

Dipartimento  
di Lettere, Filosofia,  
Comunicazione

Scuola  
di alta formazione  
dottorale

## INTERNATIONAL LANDSCAPE WORKSHOP 2026 Research Patches and World Imaginaries



### **COABITIAMO!** **Per una nuova urbanità terrestre** FrancoAngeli, 2026

**Lunedì 27 aprile, ore 17:30**  
Monastero di Astino, Bergamo



#### **Presentazione del volume di Michel Lussault**

Edizione italiana a cura di **Federica Burini** e **Alessandra Ghisalberti**  
Traduzione di **Simone Gamba**

Alla presenza dell'autore, delle curatrici e del traduttore, accompagnati dalla lettura di estratti del volume a cura di dottorande e dottorandi dell'Università degli studi di Bergamo: **Alice Bassanesi, Elena Canovo, Asia Drago, Sara Invernizzi, Matteo Locatelli, Mikel Magoni, Roberta Valsecchi**

#### **6.30 pm - Hyperplaces: Presentazione del volume di Michel Lussault**

Introduction by **Stefania Consonni** (UniBg)

Video and music by **Stefano Giovannardi** and **Luca Lezziero**

*In collaborazione con:*



#### **Clicca qui per partecipare da remoto**

Attività di Public Engagement dell'Università degli studi di Bergamo  
in collaborazione con il dottorato di ricerca in *Landscape Studies for Global and Local Challenges*

For further information about the Public Engagement event, click on the following link:  
<https://phd-landscape.unibg.it/it/corsi-e-attivit%C3%A0/international-landscape-school>



UNIVERSITÀ  
DEGLI STUDI  
DI BERGAMO

Dipartimento  
di Lingue, Letterature  
e Culture Straniere

Dipartimento  
di Ingegneria  
e Scienze applicate

Dipartimento  
di Lettere, Filosofia,  
Comunicazione

Scuola  
di alta formazione  
dottorale

## INTERNATIONAL LANDSCAPE WORKSHOP 2026 Research Patches and World Imaginaries

### Field trip

Wednesday, 29th April

### THE ADDA REGIONAL PARK

CST  
Centro studi sul territorio  
Lazio-Pagani  
UNIVERSITÀ DEGLI STUDI  
DI BERGAMO



and



in collaboration with



Parco Adda Nord



### PROGRAMMA/PROGRAMME

8.00 am – Bergamo: Partenza dalla stazione degli autobus / Departure from coach station

9.00 am – Trezzo sull'Adda: Arrivo e benvenuto a / Arrival and welcome at **Villa Gina**

9.30 am – Saluti **Giorgio Monti** (Presidente PAN), introduzione **Ignazio Ravasi** (Parco Adda Nord), **Giorgio Ravasio** (Crespi d'Adda sito UNESCO); Coordina: **Tomaso Colombo** (Direttore PAN) / Welcome by **Giorgio Monti** (President of PAN), introduction by **Ignazio Ravasi** (Parco Adda Nord), **Giorgio Ravasio** (Crespi d'Adda UNESCO World Heritage Site); Chair: **Tomaso Colombo** (Director PAN)

10.00 am – *Droit du paysage, droit au paysage?* by **Jean-Marc Besse** CNRS, École des Hautes Études en Sciences Sociales

10.40 am – Discussione moderata / *Discussion led by* **Angelo Cattaneo** (CNR-ISEM) and **Stefano Morosini** (UniBg)

11.15 am – **Crespi d'Adda**: Trasferimento *visitor centre* del sito UNESCO e passeggiata villaggio operaio / Transfer to UNESCO World Heritage Site visitor centre and walk to Industrial village

12.30 pm – Trezzo sull'Adda: Trasferimento e pranzo a bordo del battello / Transfer and lunch on a boat **Taccani Power Station**

2.30 pm – Passeggiata lungo la **forra dell'Adda**: Chiesetta dell'Addolorata "Emozioni vinciane" – ingrandimenti di schizzi di **Leonardo** del paesaggio dell'Adda. A seguire Ponte di San Michele, Canale di Paderno, Diga Vecchia, Tre Corni, Stallazzo e Santuario della Madonna della Rocchetta / Walk along **Adda gorge**: Addolorata Chapel "Emozioni vinciane" – **Leonardo's** sketches of Adda landscape; then San Michele Bridge, Paderno Canal, Diga Vecchia, Tre Corni, Stallazzo and Rocchetta Chapel *with* **Elena Canovo** and **Matteo Locatelli** (UniBg)

4.30 pm – Imbersago: Trasferimento **Traghetto di Leonardo** / Transfer to **Leonardo Ferry**

5.30 pm – Ritorno alla Stazione degli autobus / Return to Bergamo coach station, Bergamo

\*Attività di Public Engagement dell'Università degli studi di Bergamo in collaborazione con il dottorato di ricerca in Landscape Studies for Global and Local Challenges e con il contributo del Parco Adda Nord.

# Research tools for global transitions

## **Immersive walks through research patches and world imaginaries: a transcalar approach**

PhD Program *Landscape Studies for Global and Local Challenges*

### **INTERNATIONAL LANDSCAPE WORKSHOP - Research Patches and World Imaginaries**

Valle di Astino, Parco Adda Nord

27-28-29-30 April 2026

*The Immersive Walks are an initiative of:*



*Immersive Walks Scientific Coordinators:*

**Federica Burini, Alessandra Ghisalberti**, UniBG

*Immersive Walks PhD Guides:*

**Alice Bassanesi, Mikel Magoni**, UniBG

**Elena Canovo, Matteo Locatelli**, UniBG

*Immersive Walks main goal:* The immersive walks are built around the analysis of the landscape in a transcalar perspective to investigate the original/historical iconems of the landscape and their connections with other iconems related to global challenges.

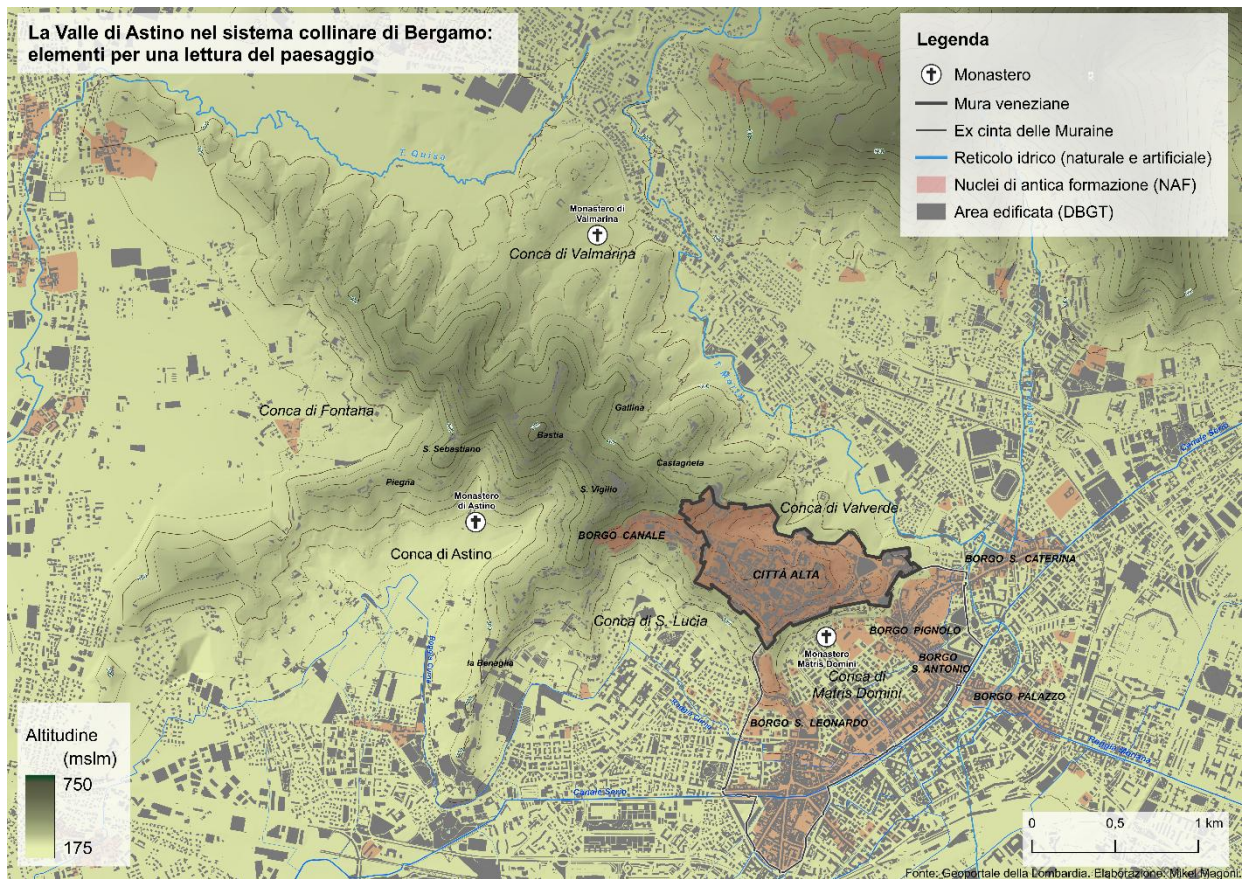
**April 28<sup>th</sup> 2026**  
**Workshop: Placetelling Experience in the Astino Landscape on**  
**Material Cultures**

By **Alice Bassanesi & Mikel Magoni**



*With the collaboration of:*





*Astino Valley: Elements for landscape interpretation (by Mikel Magoni)*



*The monastery in the 70s*

In the '80s



Today



Until 1973



*The monastery as abandoned agricultural storage (80s-90s) and today*



*Cascina Mulino before the regeneration process*



*Cascina Mulino today*



*Cascina Convento before the regeneration process*



*Cascina Convento after the regeneration process, today it hosts the CIID, Copenhagen Institute of Interaction Design*



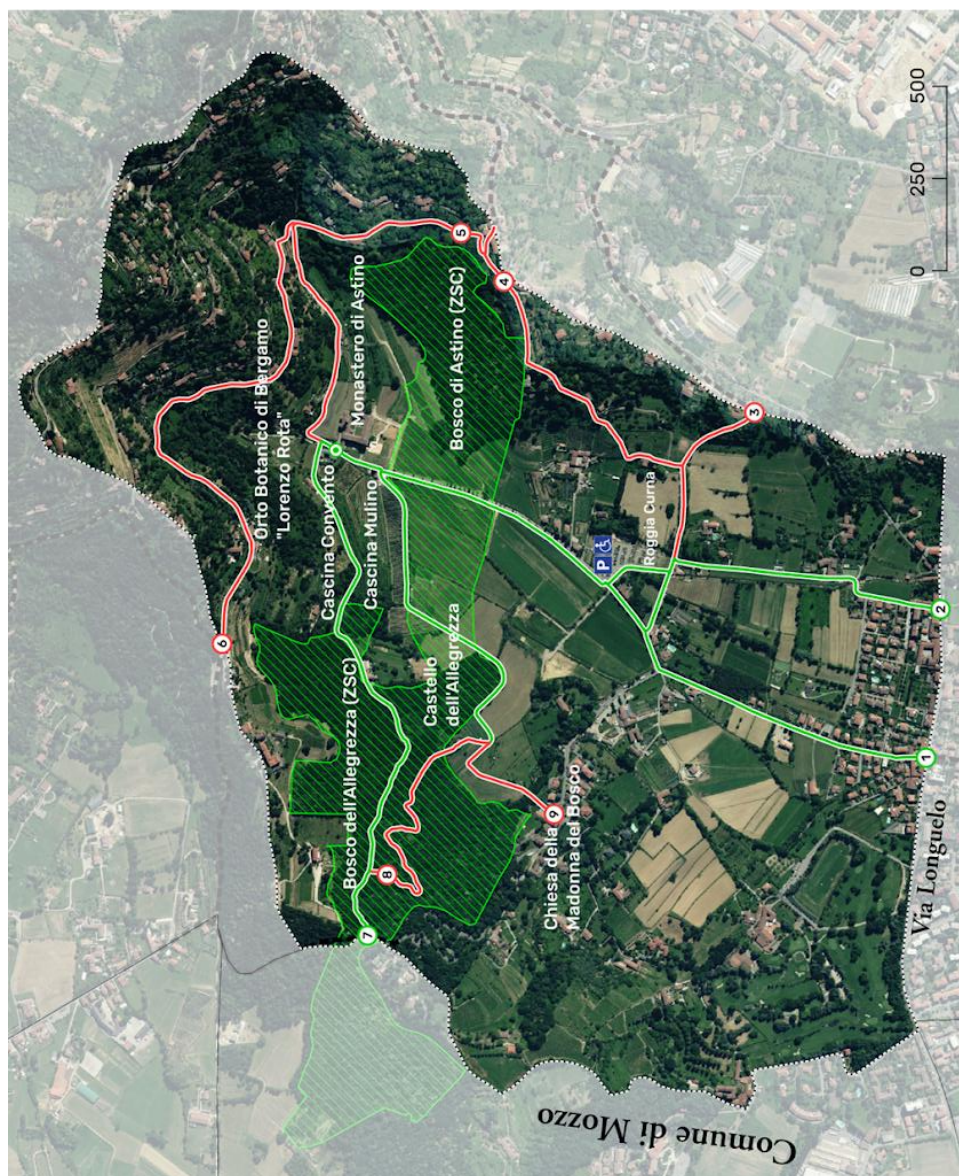
*In the Valley of biodiversity during the Workshop with participants*



*Orto botanico Lorenzo Rota – Section of Astino, The Valley of biodiversity*

## Via Allegrezza

- 1 **Via Astino** (from Via Longuelo) – 1,5 km ●
- 2 **Via del Celtro** – 1,5 km ●
- 3 **Via Ripa Pasqualina** – 1,4 km ●
- 4 **Via Moratelli** – 1,3 km ●
- 5 **Via Astino** (from Via Sudorno) – 1,5 km ●
- 6 **Via General Giovanni Marieni** – 1,3 km ●
- 7 **Via Allegrezza** – 1,2 km ●
- 8 **Via Allegrezza** (variation Castello dell'Allegrezza) – 1,7 km ●
- 9 **Sentiero Laudato si** – 1,2 km ●



Physical accessibility to cultural and natural heritage of Astino valley

## April 29<sup>th</sup> 2026 Walk along Adda gorge

Addolorata Chapel "Emozioni vinciane" - Leonardo's sketches of Adda landscape;  
then San Michele Bridge, Paderno Canal, Diga Vecchia, Tre Corni, Stallazzo and  
Rocchetta Chapel

By **Elena Canovo** and **Matteo Locatelli**



*With the collaboration of:*



### INTRODUCTION

The excursion unfolds along one of the most significant stretches of the middle course of the Adda River, crossing a landscape characterised by an extraordinary layering of history, territory, and infrastructure. Today this portion of the Adda valley is perceived primarily as a highly natural environment, visited daily for leisure, walking, running, and slow mobility along the cycling and pedestrian path that runs alongside the river. The dense vegetation, the river's deep incision into the terrain, and the relative ecological continuity all contribute to defining a landscape that appears, at least on the surface, "natural." Yet the territory traversed is in reality the product of a long and intense process of human intervention. Dams, hydroelectric power stations, artificial canals, railway infrastructure, navigation works, religious buildings, and logistical support structures all bear witness to how the river was for centuries a space of labour, transit, energy production, and territorial control. For a long time, the course of the Adda was also dotted with mills, workshops, and small proto-industrial activities that harnessed the motive power of water, contributing to the formation of a productive landscape intimately bound to the river's resources.

The Adda therefore represents not merely a natural element, but a genuine historical infrastructure that has profoundly shaped the economic and settlement organisation of this part of Lombardy. For a long time, the river served not only as a physical boundary, but also as a political, economic, and cultural divide between what we today call western and eastern Lombardy. For approximately three and a half centuries in particular, the Adda marked the border between the Duchy of Milan to the west and the Republic of Venice to the east. This frontier condition made the valley a strategic territory, subject to defensive systems, controls on traffic, and economic dynamics closely tied to river navigation and crossing. Today the area falls within the Parco Adda Nord, established in 1983 with the aim of protecting the environmental, historical, and landscape heritage of the middle course of the Adda. The park encompasses a highly heterogeneous territory in which natural elements, industrial archaeology, historical infrastructure, and religious heritage coexist within a

complex landscape profoundly transformed by centuries of interaction between human activity and nature.

The excursion begins at the boundary between the municipalities of Robbiate and Paderno d'Adda, in the province of Lecco, proceeding along the cycling and pedestrian path that follows the river and passes through some of the most significant sites of the Adda's historical landscape. Along the route, the following elements will be observed and examined in sequence: the Diga Nuova di Robbiate, the Ponte San Michele, the Diga Vecchia and the Naviglio di Paderno, the chapel of Santa Maria Addolorata, the Stallazzo, and the Sanctuary of the Madonna della Rocchetta, highlighting the deep connections between infrastructure, landscape, territorial history, and the human transformation of the river.

### ① **ELEMENT: DIGA NUOVA / DIGA DI ROBBIATE**

The Diga Nuova di Robbiate, built between 1912 and 1914, is one of the central elements of the hydroelectric system developed along the middle course of the Adda during the early decades of the twentieth century. The dam was designed to divert part of the river's waters into an artificial canal positioned at a higher elevation than the natural riverbed, thereby exploiting the hydraulic drop for the generation of electricity. The canal feeds the Porto d'Adda hydroelectric power station, today known as the (Carlo) Esterle plant, located further downstream in the municipality of Cornate d'Adda. The dam and the power station entered into operation together in 1914, forming an integral part of the major process of electrification and industrialisation that transformed the Adda valley between the late nineteenth and early twentieth centuries.

From a landscape and territorial perspective, the dam marks the transition from a river system historically associated with navigation and proto-industrial activity to a new configuration centred on hydroelectric exploitation of the water. The intervention contributed to transforming the Adda into a genuine energy infrastructure, capable of fuelling Lombardy's industrial development.

### ② **ELEMENT: PONTE SAN MICHELE**

Built between 1887 and 1889 by the Swiss engineer Jules Röthlisberger on behalf of the Società Nazionale Officine di Savigliano, the Ponte San Michele is one of the most significant works of Italian metal engineering from the late nineteenth century. The company, among the leading firms specialising in metalwork construction of the period, was responsible for the construction of the entire structure, conceived as a strategic infrastructure for linking the two banks of the Adda. Built entirely in iron, the bridge measures approximately 266 metres in length and reaches a height of around 85 metres above the river. The structure is distinguished by the absence of central piers in the riverbed, a particularly advanced technical solution for the time, made possible by the imposing metal lattice arch that supports the entire deck.

The infrastructure features a mixed-traffic configuration arranged across two differentiated levels: the upper deck was designated for road traffic, while the lower level accommodated the railway line, an integrated road-rail system that was an exceptionally innovative solution within the infrastructural landscape of the era. The name "San Michele" derives from the presence, prior to the bridge's construction, of a massive boulder located in the bed of the Adda that was traditionally dedicated to Saint Michael. To this day, one of the large rock outcrops situated downstream of the structure retains this dedication, keeping alive the symbolic and devotional memory associated with the site.

### ③ **ELEMENT: DIGA VECCHIA / DIGA DI PADERNO AND THE NAVIGLIO DI PADERNO**

The Diga Vecchia di Paderno d'Adda, built by Edison between 1895 and 1898, stands at the point where a submerged weir had already been constructed in 1777 to regulate the water level of the Adda and channel its flow towards the Naviglio di Paderno. This canal had a long and complex gestation, initiated as early as the sixteenth century with the first studies and attempts at river canalisation, which nonetheless remained unfinished for a considerable

time. The work was completed only in the second half of the eighteenth century, within the framework of the Duchy of Milan, with the conclusion of construction and the official inauguration in 1777. The canal made it possible to bypass the most arduous stretch of the Adda, ensuring the continuity of navigation between the territories upstream and the Milanese canal system, overcoming the rapids and steep gradients that characterised this section of the valley.

With the construction of the new dam at the end of the nineteenth century, the hydraulic system took on a different function, closely tied to the industrial and energy development of the territory. The dam allowed part of the river's flow to be diverted towards the Porto d'Adda hydroelectric power station, which entered into operation in 1898 and is today known as the (Angelo) Bertini plant. In this way, the Naviglio di Paderno was progressively reconfigured: from an infrastructure originally intended for navigation, it became an essential component of the emerging hydroelectric system along the middle course of the Adda.

#### ④ **ELEMENT: CHAPEL OF SANTA MARIA ADDOLORATA**

The chapel of Santa Maria Addolorata, also referred to as the Oratorio dell'Addolorata, stands near the inlet of the Naviglio di Paderno and the Diga Vecchia, at a pivotal point in the fluvial landscape of the Adda. The term *oratorio* denotes its nature as a small religious building intended for local prayer and devotion, distinct from a parish church in terms of size, function, and community use. The building, most likely constructed in the first half of the eighteenth century at the initiative of private citizens connected to the mill owners active along this stretch of the river, was not built with its current dedication. It was originally known as the Oratorio di Sant'Ambrogio; only later did it acquire the dedication to the Blessed Virgin Mary of Sorrows, the name by which it is known today. This change of title reflects the devotional layering of the site and the continuity of its symbolic value within the landscape of the Adda.

In 1777, the year of the inauguration of the Naviglio di Paderno, the oratory was already in existence and found itself in close proximity to the entrance of the new canal. Its presence serves as a reminder that this landscape is not shaped solely by hydraulic works, labour, and technology, but also by forms of widespread religiosity rooted in the daily lives of boatmen, workers, and riverside inhabitants.

Inside the chapel, two modern prints are displayed depicting the two celebrated versions of Leonardo da Vinci's *Virgin of the Rocks*, evoking the symbolic connection between Leonardo, the landscape of the Adda, and the geological imagery conjured by the work. The first print reproduces the so-called first version, created between 1483 and 1486 and now held at the Musée du Louvre in Paris. The work had originally been commissioned by the Confraternity of the Immaculate Conception in Milan; however, following financial disputes between Leonardo and his patrons, the painting was never delivered to the confraternity and is thought to have been subsequently transferred to Ludovico Sforza, the hypothesis most widely accepted by historians, though lacking definitive documentary confirmation. The second print reproduces the second version of the work, now held at the National Gallery in London. This version was indeed delivered to the Confraternity of the Immaculate Conception for the church of San Francesco Grande in Milan, a major religious building demolished in 1806 during the Napoleonic era. The church, located in the area of today's Piazza Sant'Ambrogio, was one of the largest in Milan at the time.

The two versions are distinguished primarily by the presence, in the second, of more explicit religious and iconographic elements, such as halos and the cross of Saint John, which are absent or less prominent in the first, Parisian version. According to some interpretations, the rocky landscape depicted in the *Virgin of the Rocks* may have been inspired by the scenery of the Adda and, in particular, by the configuration of the so-called "Tre Corni." This remains, however, a compelling hypothesis unsupported by documentary evidence, yet significant in the context of the cultural and symbolic connections between Leonardo and the territory through which the river flows.

#### ⑤ **ELEMENT: STALLAZZO**

The Stallazzo stands near the Sanctuary of the Madonna della Rocchetta and was originally an integral part of the navigation system of the Naviglio di Paderno. Its primary function was linked to upstream navigation: it served as a stopping and resting station for the horses employed in towing barges along the *alzaia*, the towpath running alongside the canal, which allowed vessels to be hauled through the more difficult sections of the waterway. The name "Stallazzo" derives precisely from the presence of a large stable or shelter for the animals used in the towing operation. The building was therefore not an isolated structure, but a functional element within the broader waterway infrastructure of the Naviglio di Paderno, closely connected to the transport and circulation of goods between the territories upstream of the Adda and the Milanese canal network.

The presence of the Stallazzo offers concrete testimony to the organisational complexity of river navigation between the eighteenth and nineteenth centuries, demonstrating that the operation of the Naviglio required not only hydraulic and engineering works, but also a network of logistical support structures distributed along the route.

## ⑥ ELEMENT: SANCTUARY OF THE MADONNA DELLA ROCCHETTA

Situated a short distance from the Stallazzo, the Sanctuary of the Madonna della Rocchetta stands on a rocky promontory overlooking the course of the Adda, in a position of considerable landscape and strategic importance. The distinctive morphological configuration of the site determined, from the medieval period onwards, its function as a point of observation and territorial control over the river valley. At the end of the fourteenth century, a small church dedicated to the Madonna was built here, from which the sanctuary's current name derives. However, the site of the Rocchetta already possessed a defensive function prior to this: its elevated position and the natural protection offered by the rock made it a strategic vantage point for monitoring movement along the Adda valley. Between the late Middle Ages and the fifteenth century, this section of the Adda also lay within a particularly sensitive border zone between the Duchy of Milan and the Republic of Venice. Prior to the Peace of Lodi (1454) between the two powers, the area was subject to frequent political and military tensions, taking on the character of a contested territory and a strategic stronghold. In this context, the Rocchetta site temporarily reassumed a strategic and military function, becoming part of the wider defensive system developed along the course of the Adda. As the territorial balance shifted during the sixteenth century, the defensive function gradually declined in importance and the complex was progressively abandoned from a military standpoint.

A new phase of enhancement for the sanctuary came in the eighteenth century, during the construction of the Naviglio di Paderno. The presence of the construction site and the growing movement of men and goods along the canal encouraged the recovery and gradual restoration of the religious building, which once again came to play a significant role within the landscape of the Adda, no longer as a military stronghold, but as a place of devotion and a point of reference for workers, boatmen, and the inhabitants of the surrounding territory.

## BIBLIOGRAPHY

- Castagna, A. (2016), *Il Naviglio di Paderno. Un'opera pubblica nella Lombardia del secondo Settecento*, Milano, Bibliion
- Dolci, F., Lorenzi, M., Petruzzo, G. (2003), *Il medio corso dell'Adda. Il fiume, la valle e il Parco Adda Nord*, Bergamo, Provincia di Bergamo – Servizio Aree Protette / Parco Adda Nord
- Donadoni, M. (2011), *L'Adda da Lecco al Po*, Milano, Hoepli
- Mauri, M. (2014), *In mezzo scorre l'Adda. Natura, arte, cultura, storia nel Parco Adda Nord*, Missaglia, Bellavite
- Regione Lombardia (2022), *Concessione Esterle-Bertini-Semenza. Documentazione tecnica sulle grandi derivazioni idroelettriche*, Milano, Regione Lombardia
- Romanoni, F. (2023), *La guerra d'acqua dolce. Navi e conflitti medievali nell'Italia settentrionale*, Bologna, Biblioteca Clueb

- Stucchi, G. (2020), "Paderno d'Adda, oratorio dell'Addolorata (già Sant'Ambrogio)", in *Ecomuseo Adda di Leonardo*, 24 agosto 2020



### **Contacts**

[federica.burini@unibg.it](mailto:federica.burini@unibg.it)  
[alessandra.ghisalberti@unibg.it](mailto:alessandra.ghisalberti@unibg.it)

